



Beaufort County
Public Works
Stormwater Infrastructure
Project Summary

Project Summary: Port Royal Island Washout Repairs - Lonesome Court and Taylor Street

Activity: Routine/Preventive Maintenance

Narrative Description of Project:

Repaired washouts.

Duration: 7/20/16 - 9/22/16

2016-503 / Port Royal Island Washout Repairs	Labor Hours	Labor Cost	Equipment Cost	Material Cost	Contractor Cost	Indirect Labor	Total Cost
AUDIT / Audit Project	0.5	\$11.75	\$0.00	\$0.00	\$0.00	\$6.62	\$18.36
HAUL / Hauling	5.0	\$111.35	\$39.95	\$2.66	\$0.00	\$72.10	\$226.06
ONJV / Onsite Job Visit	4.0	\$126.43	\$10.62	\$0.00	\$0.00	\$79.16	\$216.21
RPWO / Repaired Washout	24.0	\$537.82	\$37.87	\$71.73	\$0.00	\$334.98	\$982.39
2016-503 / Port Royal Island Washout Repairs Sub Total	33.5	\$787.34	\$88.44	\$74.39	\$0.00	\$492.85	\$1,443.02
Grand Total	33.5	\$787.34	\$88.44	\$74.39	\$0.00	\$492.85	\$1,443.02

Before



After





Project: Port Royal Island Washout Repairs- Lonesome Court Map #1

Activity: Routine/ Preventive Maintenance

Project #: 2016-503

Township/SW Dist: Port Royal Island/6

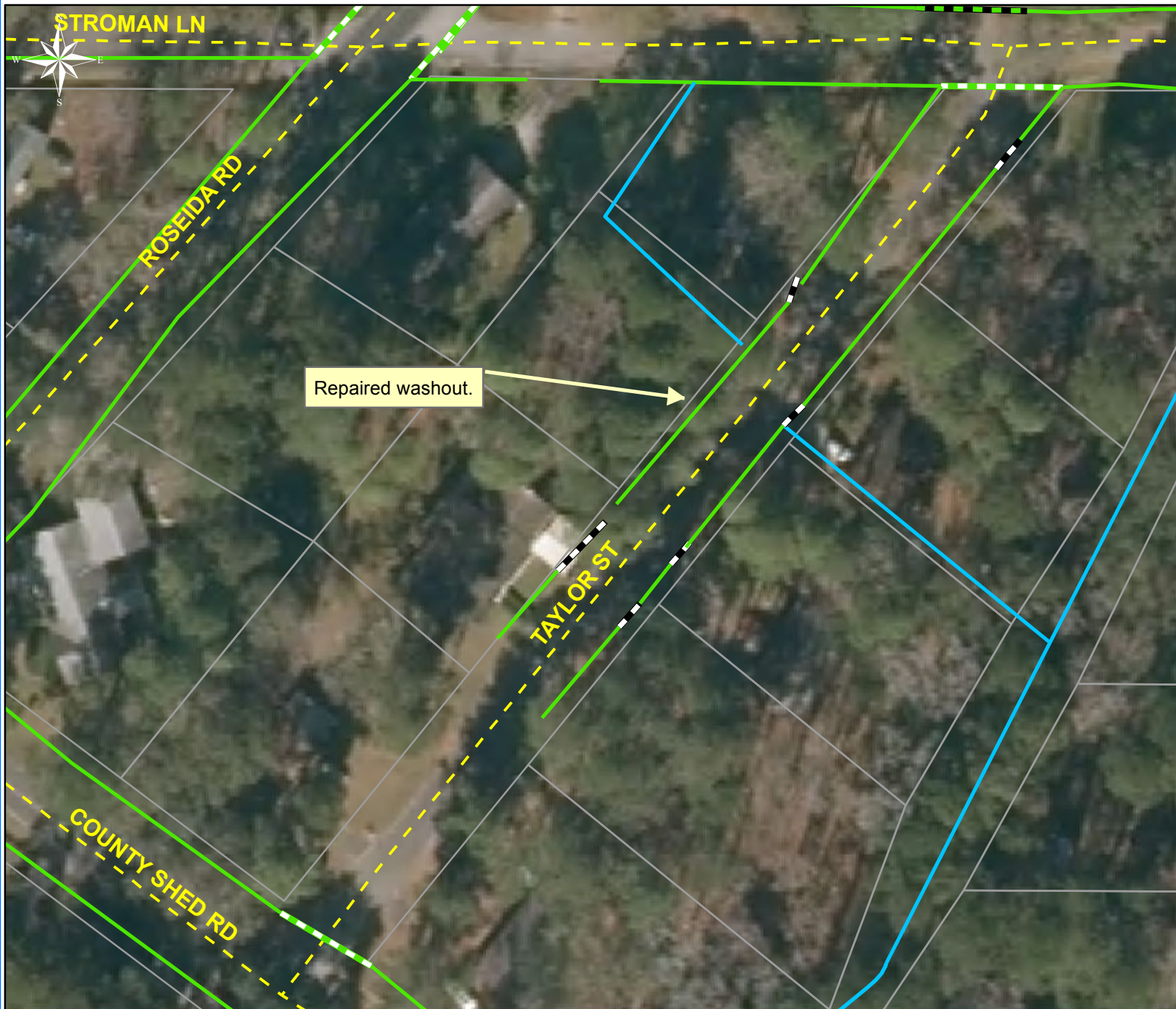
Completed: September 2016

Legend

- Drainage Type**
- Access Pipe
 - Bleeder Pipe
 - Channel Pipe
 - Channel
 - Stream
 - Crossline Pipe
 - Driveway Pipe
 - Lateral
 - Lateral Pipe
 - River
 - Road Pipe
 - Roadside
 - Roadside Pipe

0 15 30 60 90 120 Feet

1 inch = 67 feet



Project: Port Royal Island Washout Repairs- Taylor Street Map #2

Activity: Routine/ Preventive Maintenance

Project #: 2016-503

Township/SW Dist: Port Royal Island/6

Completed: September 2016

Legend

Drainage Type

- Access Pipe
- Bleeder Pipe
- Channel Pipe
- Channel
- Stream
- Crossline Pipe
- Driveway Pipe
- Lateral
- Lateral Pipe
- River
- Road Pipe
- Roadside
- Roadside Pipe



1 inch = 67 feet